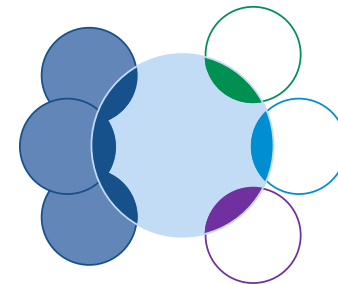


Samtykkebasert lånesøknad

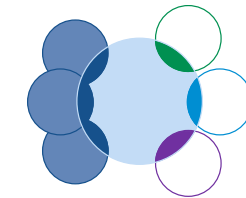


Forvaltningsprosesser

- Bank
- Bits
- Altinn
- Skatteetaten



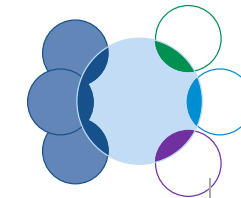
Om fremstillingen av prosessene i denne presentasjonen



- De fire hovedaktørene i SBL er:
 - Skatteetaten: Tjeneste- og dataeier
 - Brønnøysundregistrene (Altinn): eier av samtykke løsning som brukes i SBL
 - Bits: Kontaktpunkt mellom finansnæringen og det offentlig i SBL
 - Bank: Datakonsument som benytter SBL
- Forvaltningsprosessene er beskrevet i form av fire «swim lane» hvor de fire hovedaktørene har hver sitt felt
- Aktørene er enige om prosessene og er selv ansvarlige for å implementere alle trinn i sin «swim lane» i egen organisasjon



Om forvaltningsprosessene i SBL



Forvaltningsprosesser

Beskrivelse

A – Onboarding – Masseutrulling

- Prosess for å kunne rulle ut alle finansinstitusjoner som er meldt inn i kø-ordningen i Bits

B – Onboarding – Enkelte bank

- Prosess for å kunne rulle ut enkelte finansinstitusjoner etter at masseutrulling er gjennomført

C – Varsling ut til bank

- Prosess for at Skatteetaten og Altinn varsler finansinstitusjoner ved feil eller endringer i test og/eller produksjon

D – Feilmelding fra bank

- Prosess for at finansinstitusjoner melder inn feil gjennom Bits

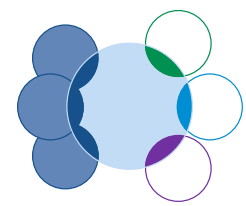
E – Spørsmål fra bank og faglig veiledning

- Prosess for at finansinstitusjoner stiller spørsmål om tjenestene gjennom Bits og får faglig veiledning av Bits

F – Endringsønsker og forvaltning av vilkår

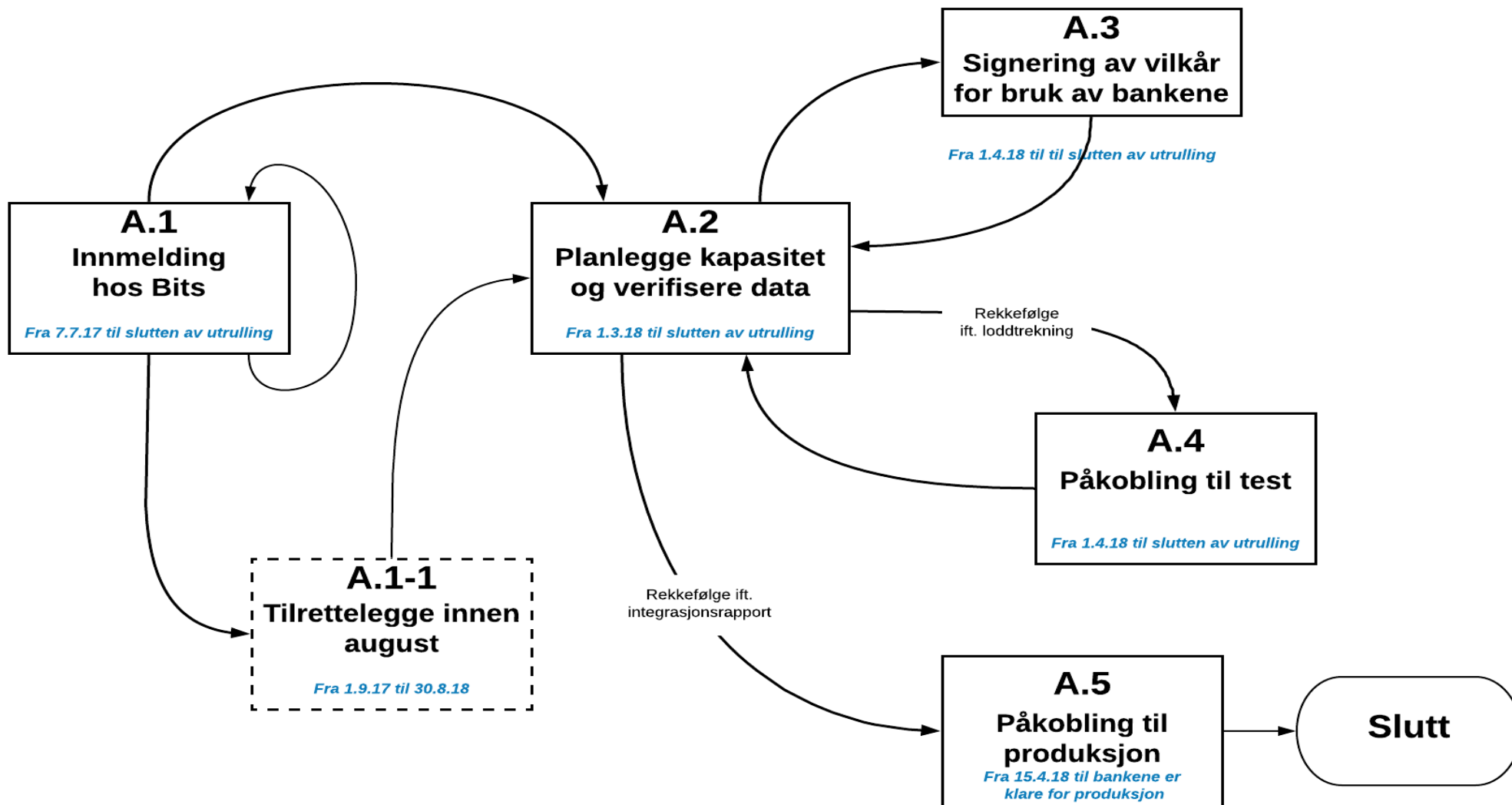
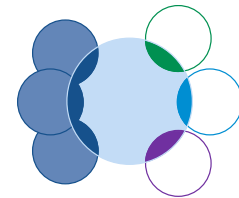
- Prosess for innmelding og prioritering av endringsønsker fra finansnærings side og prosess for å behandle ønskene hos det Offentlige
- Prosess for å forvalte endringene i vilkårene gjennom Bits



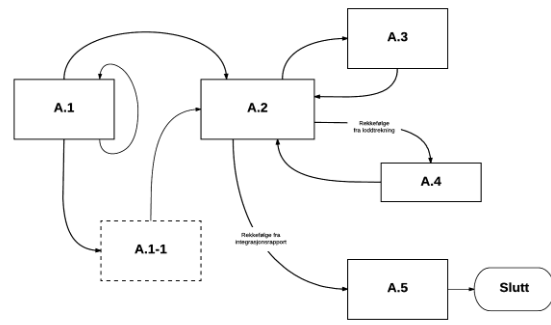
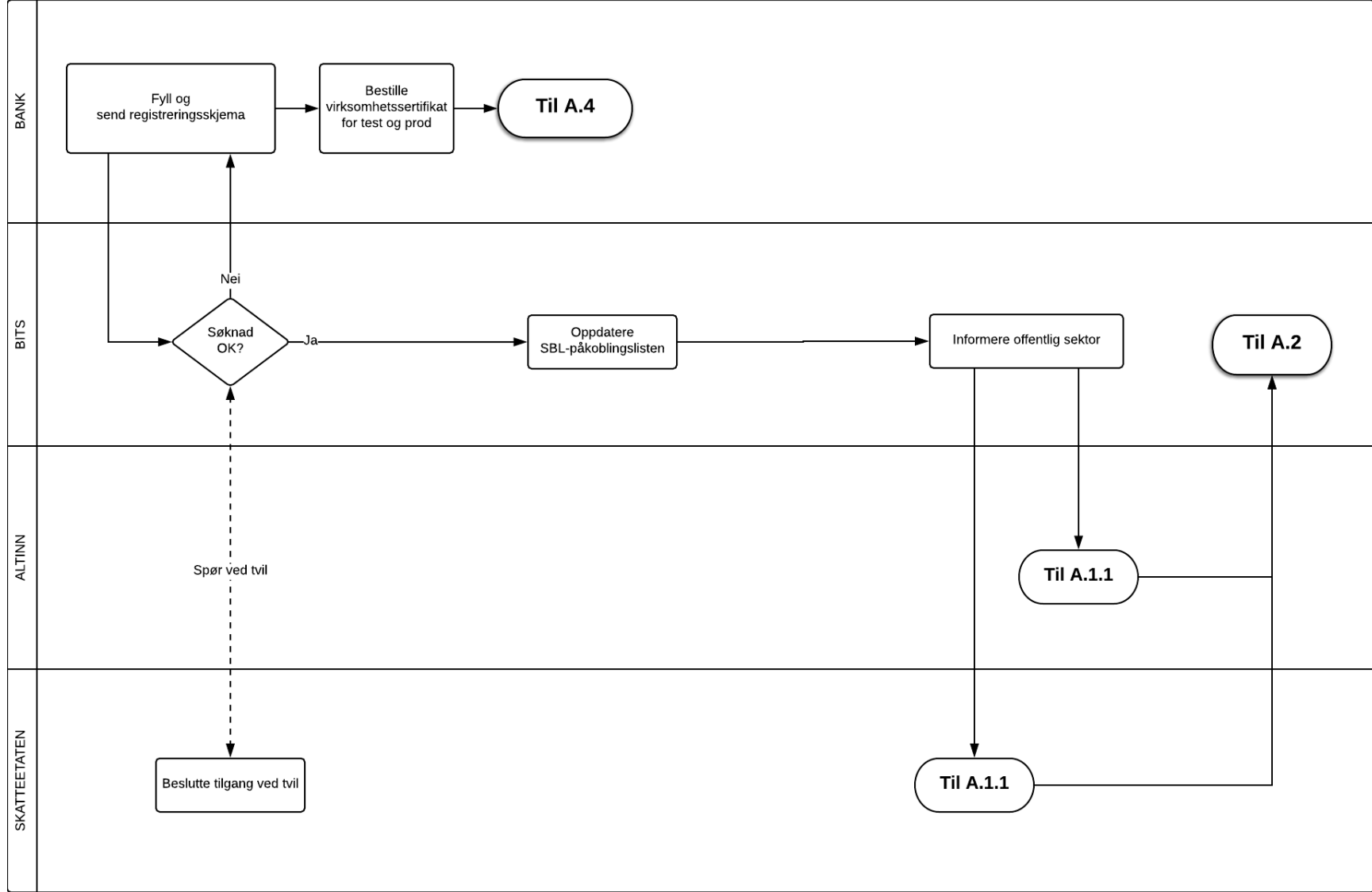
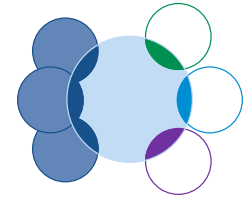


A Onboarding – Masseutrulling

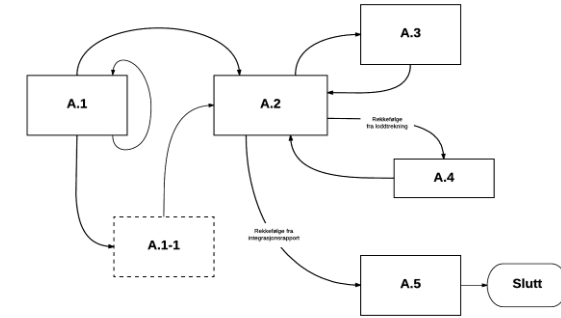
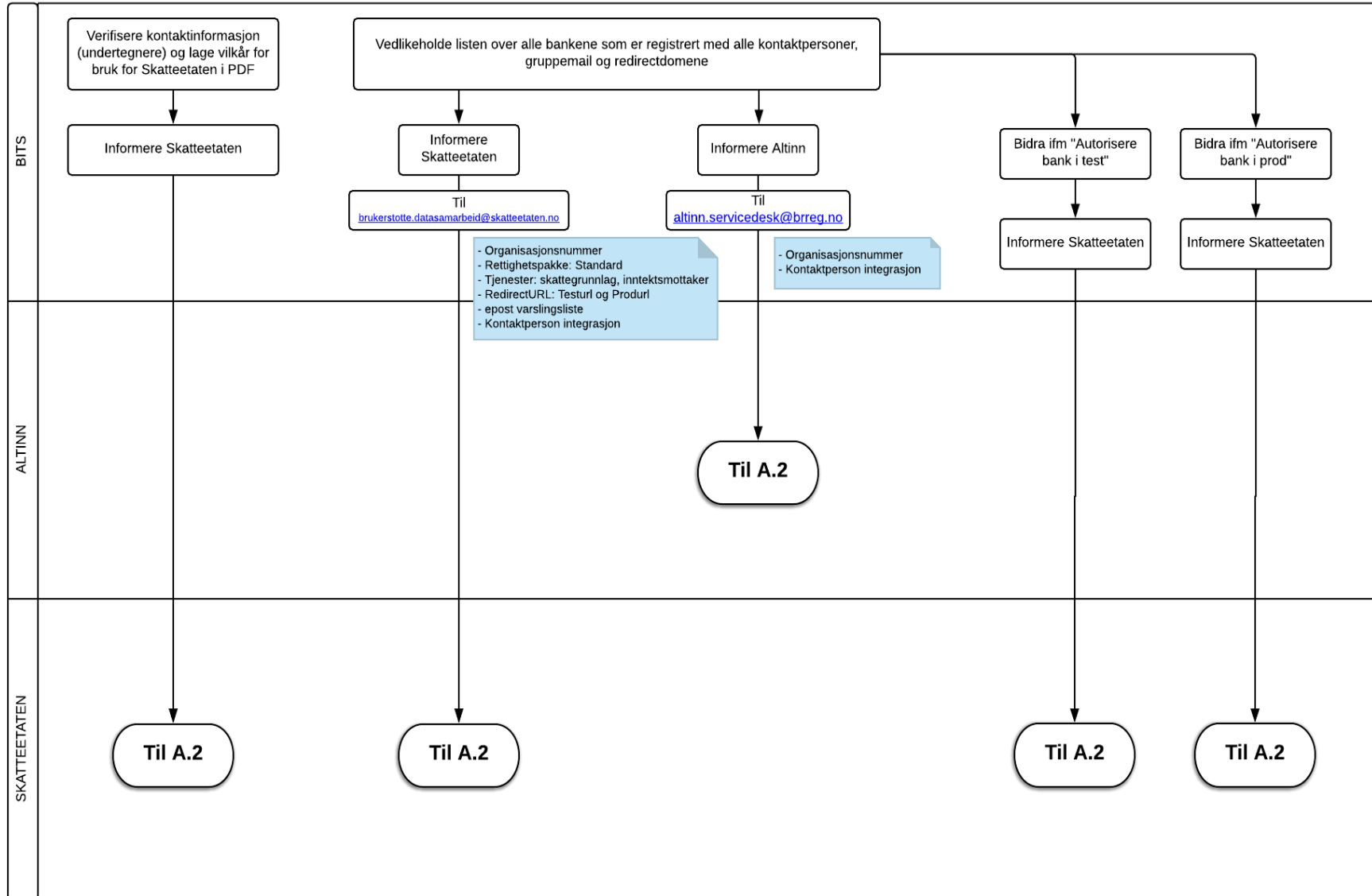
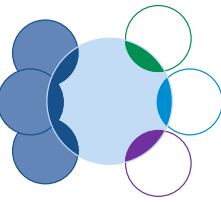
A Onboarding – Masseutrulling (Prosess)



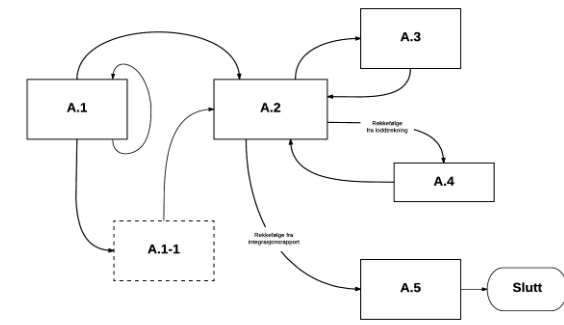
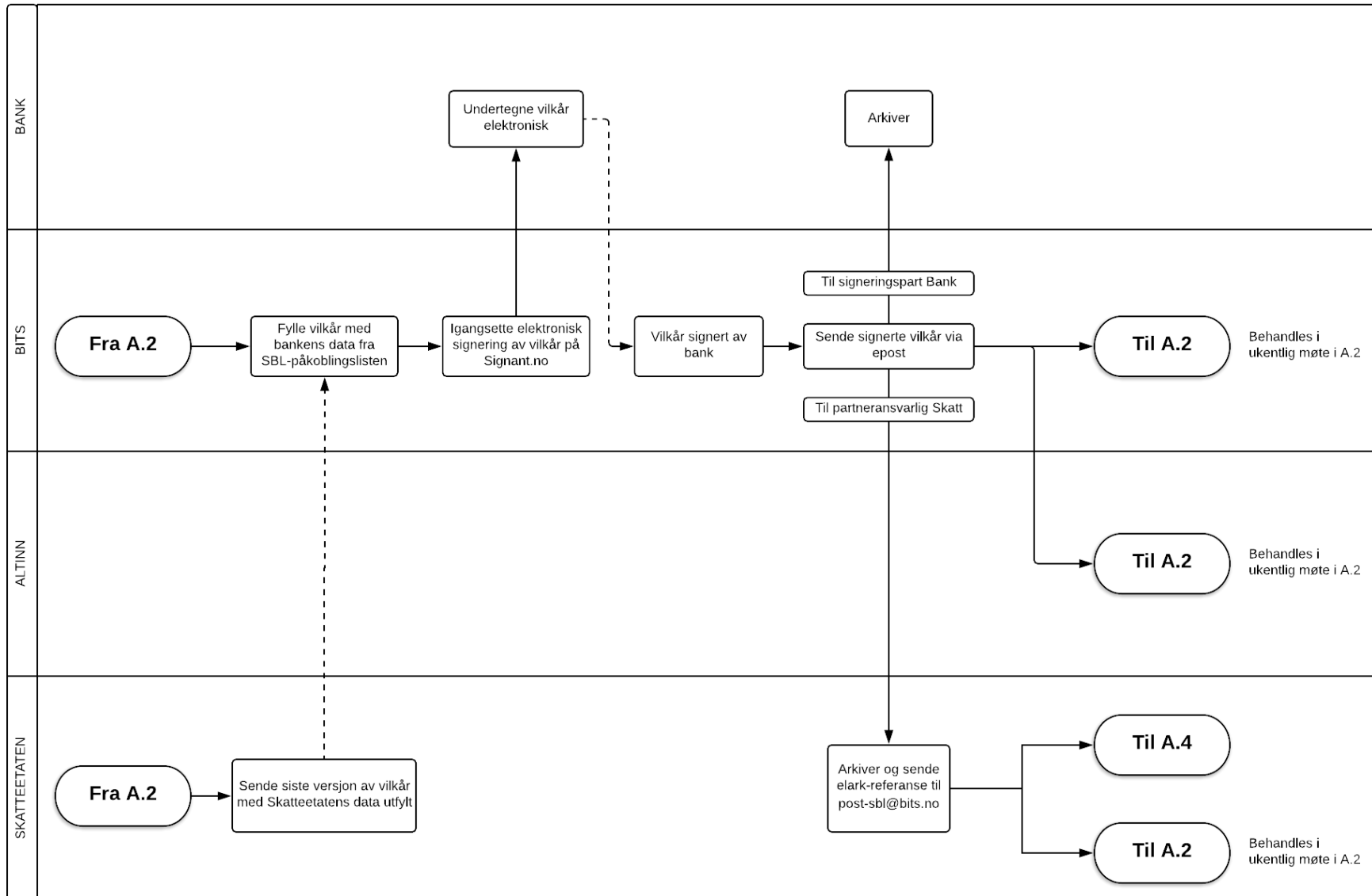
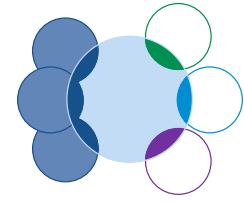
A.1 Innmelding hos Bits



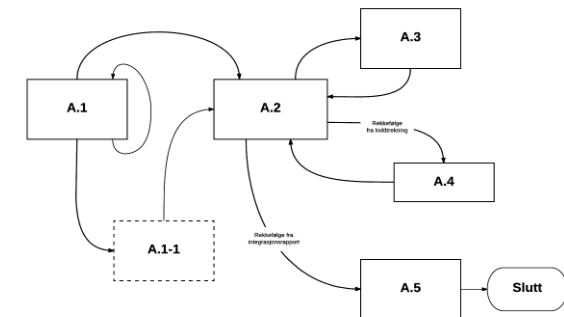
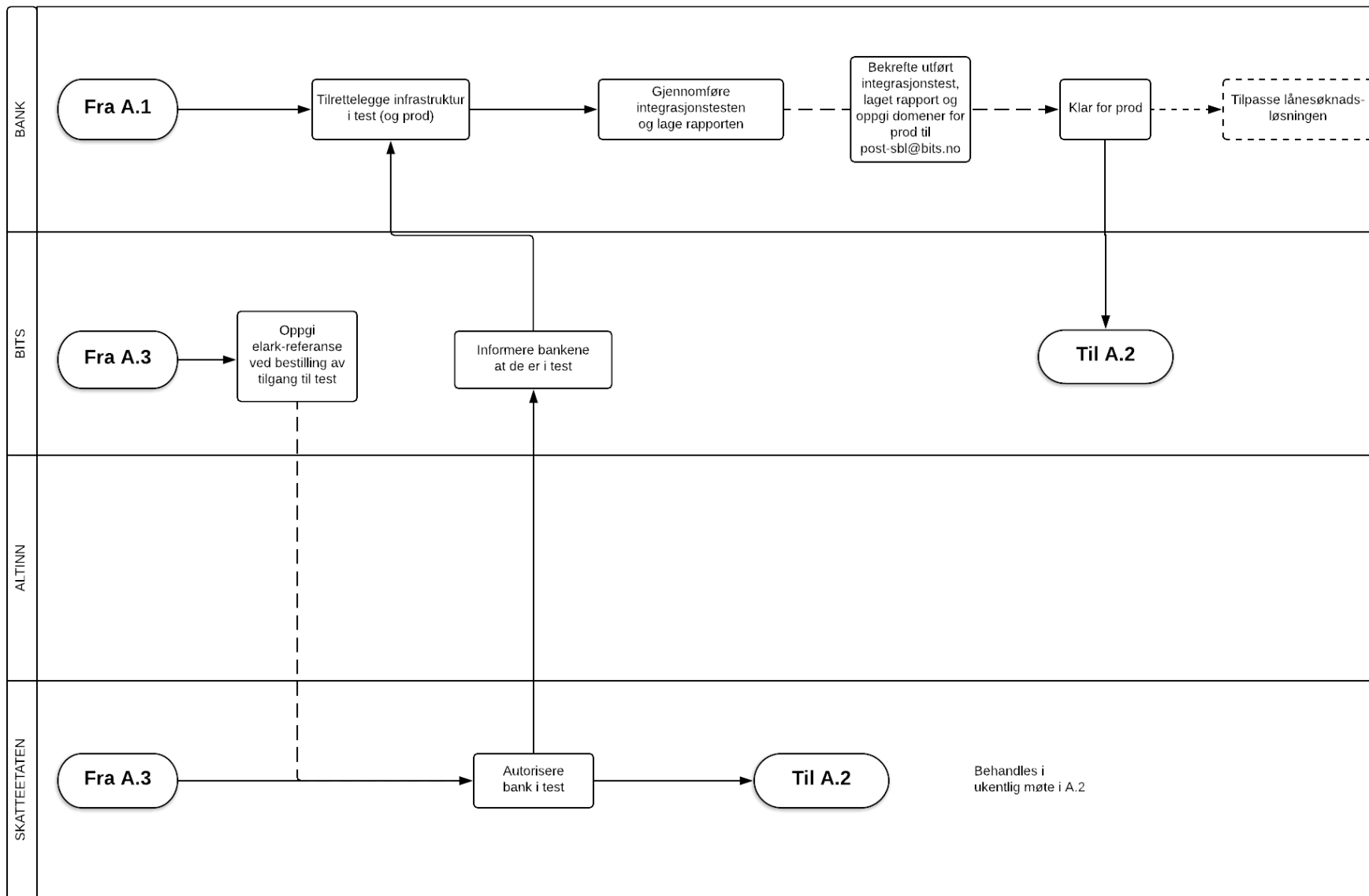
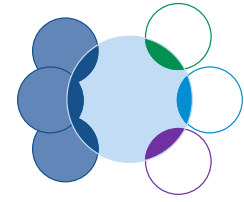
Tilrettelegge innen august 2018



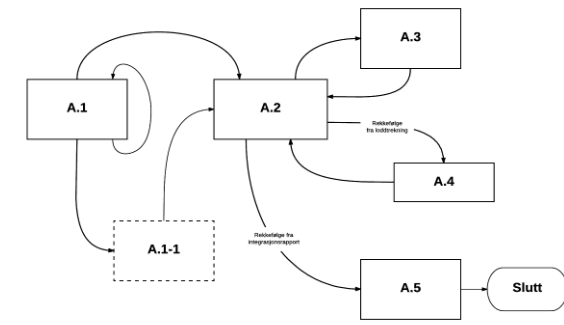
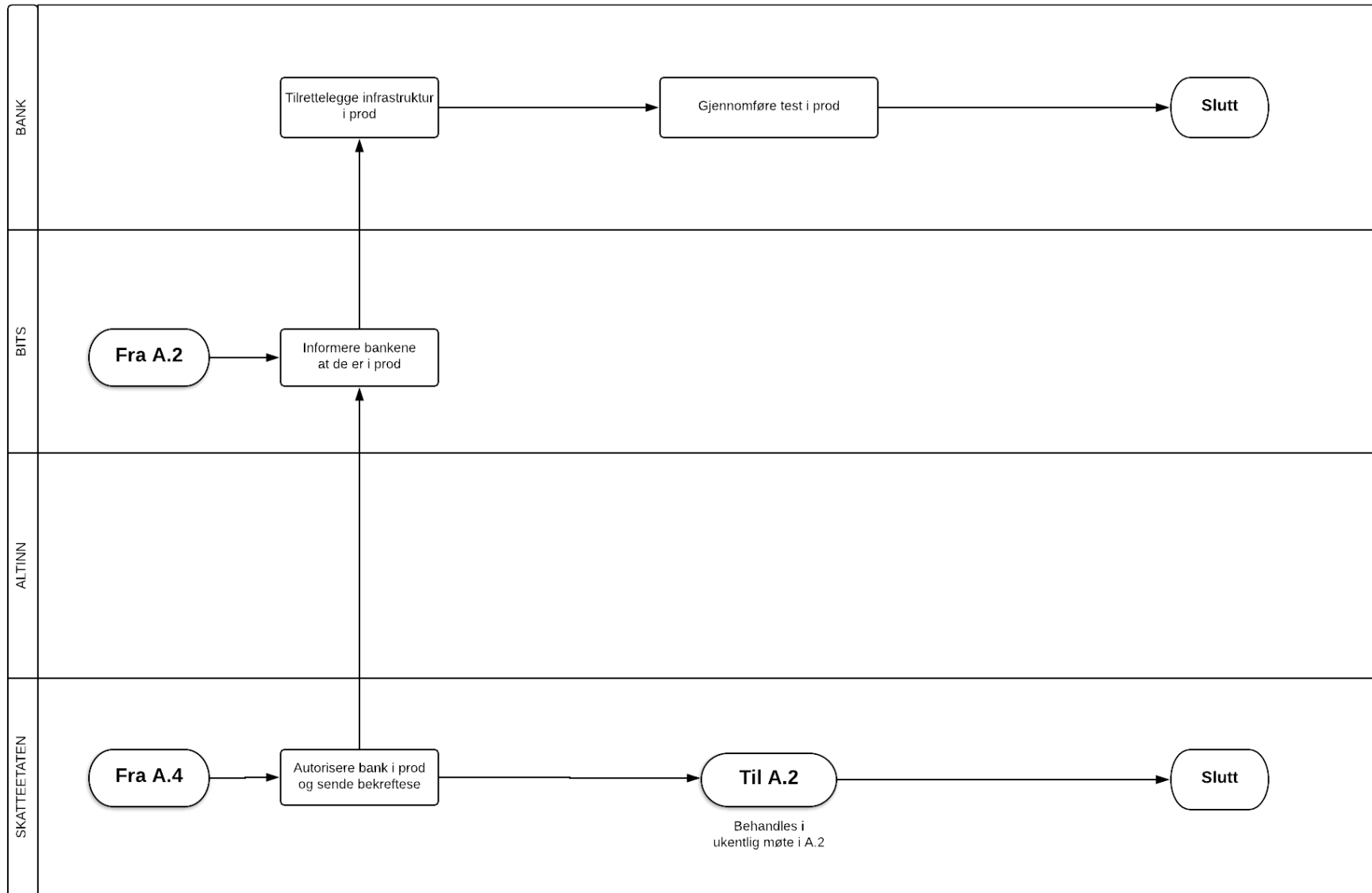
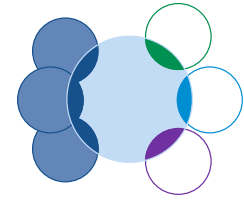
A.3 Signering av vilkår for bruk av bankene

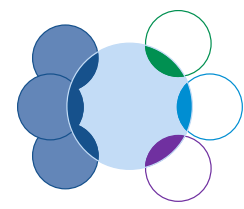


A.4 Påkobling til test



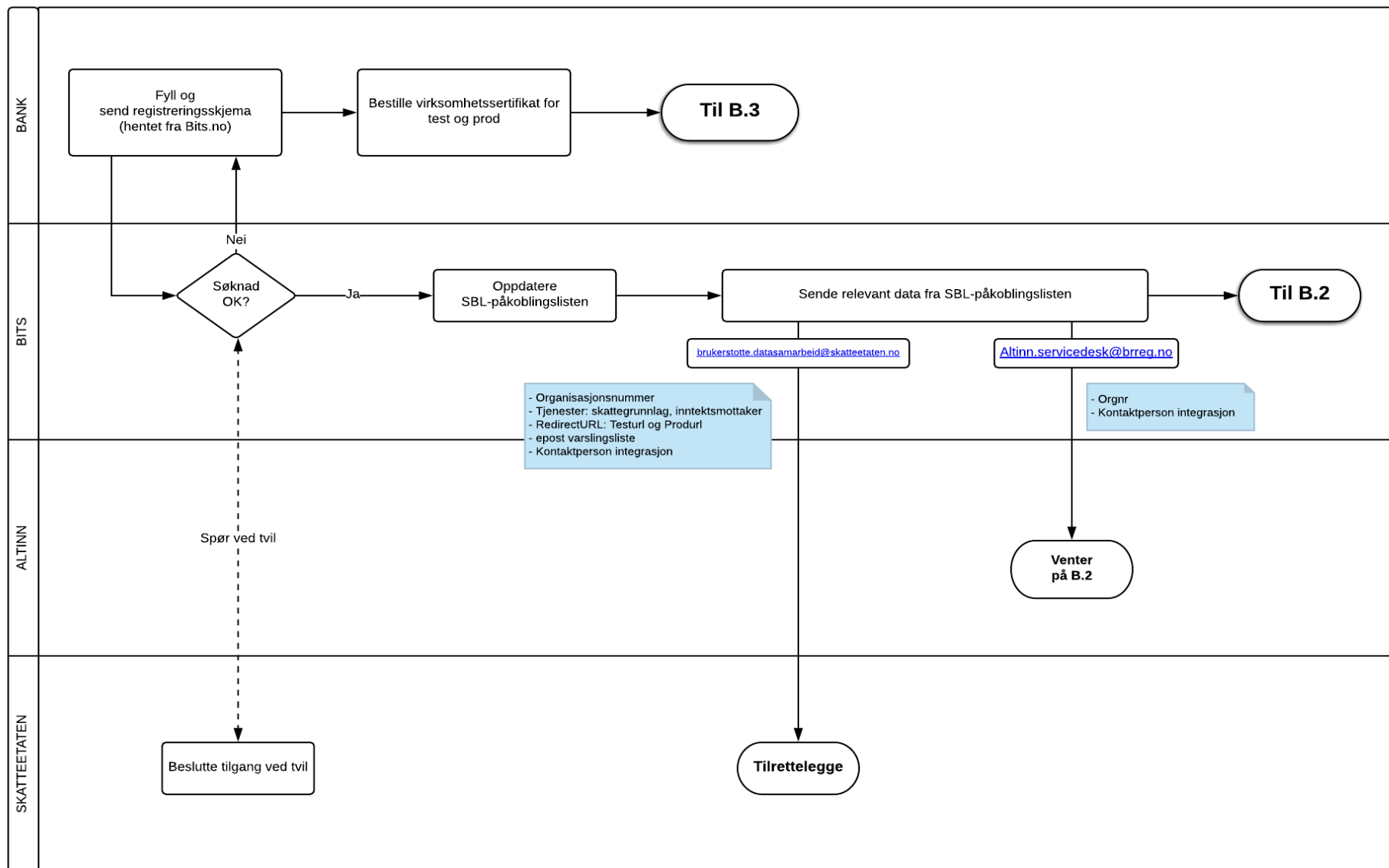
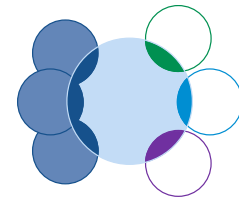
A.5 Påkobling til produksjon



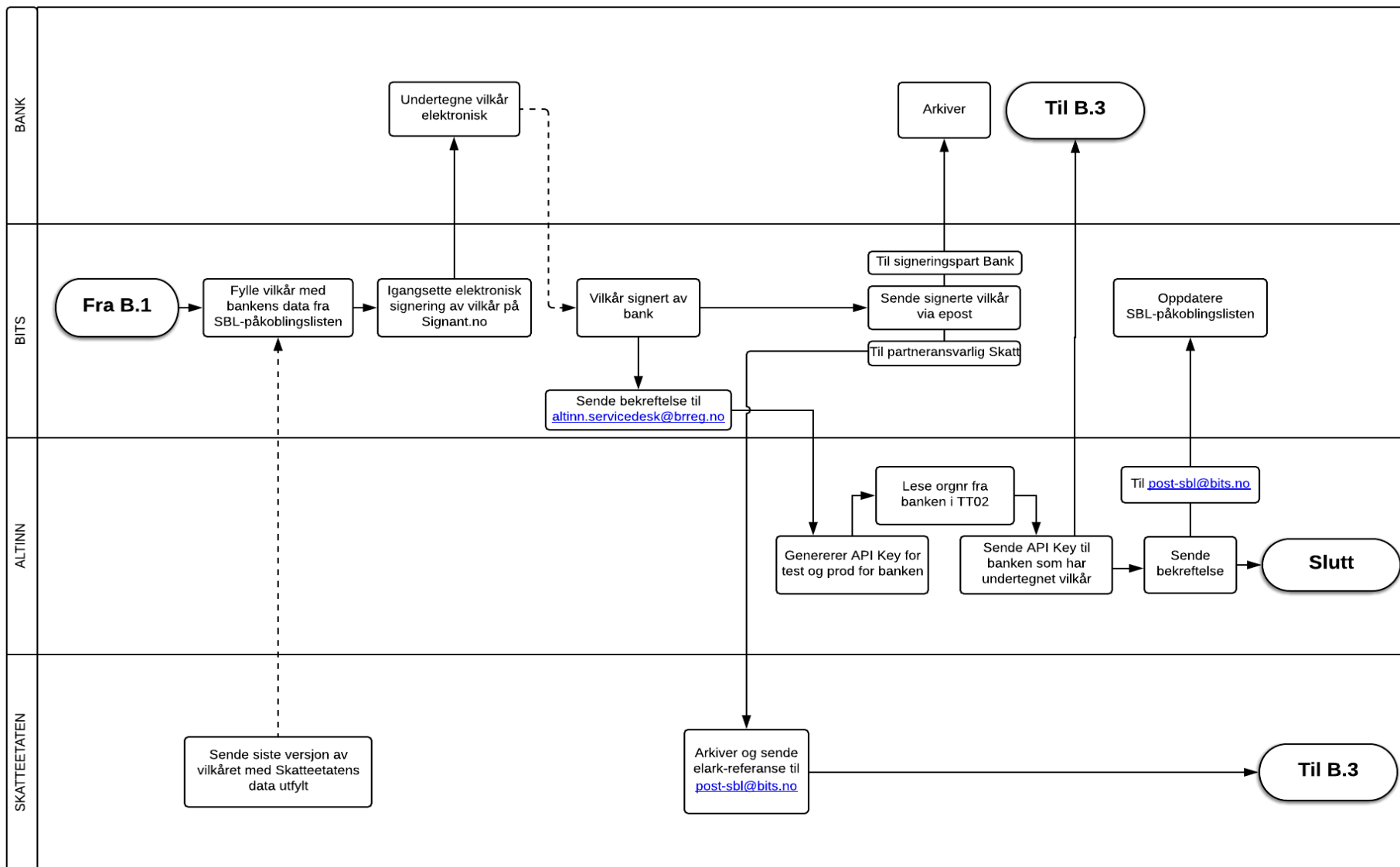
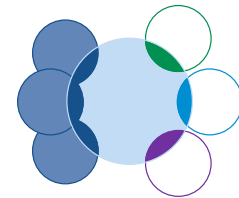


B Onboarding – Enkelte bank

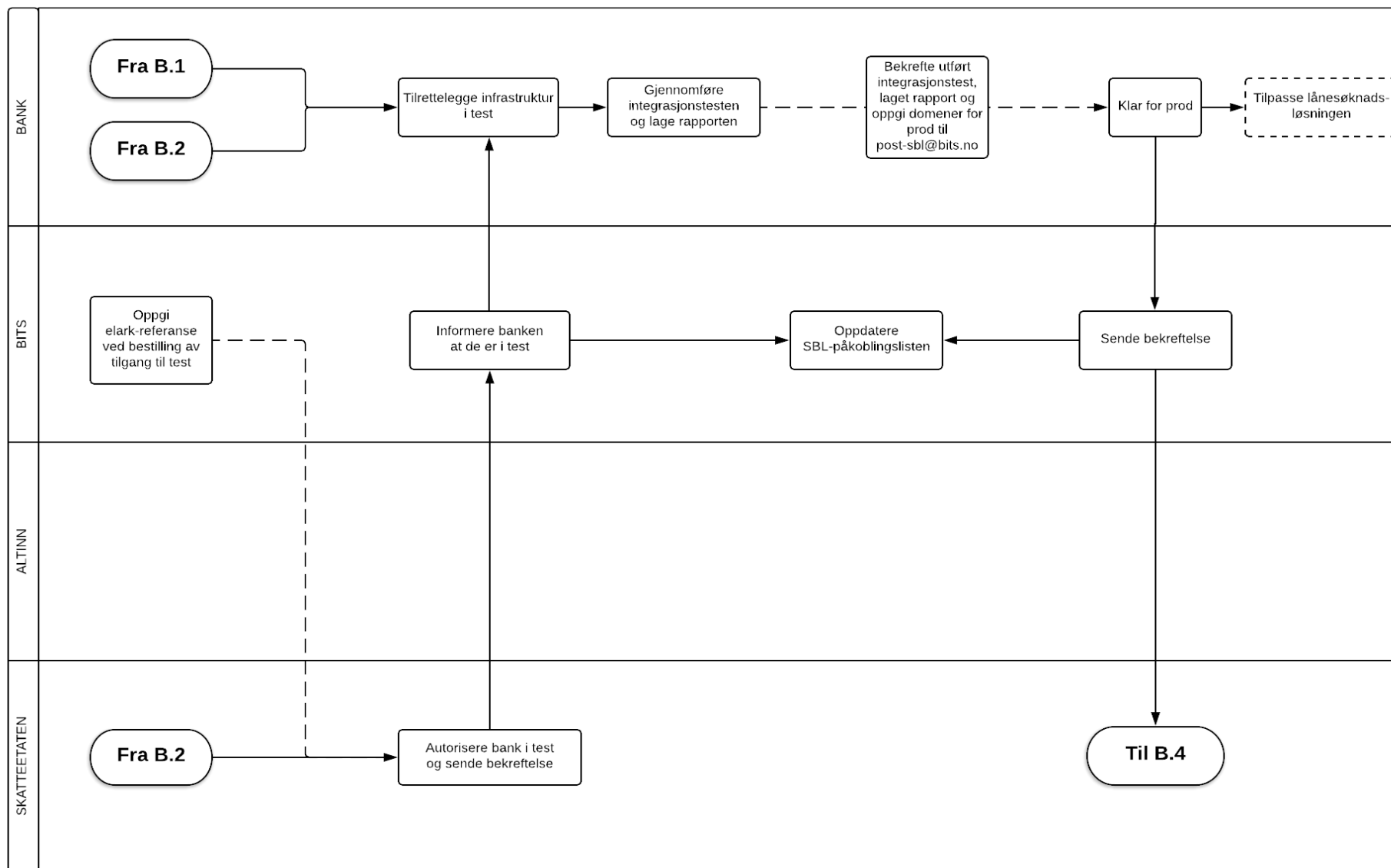
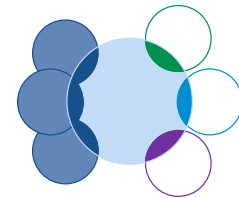
B.1 Innmelding hos Bits



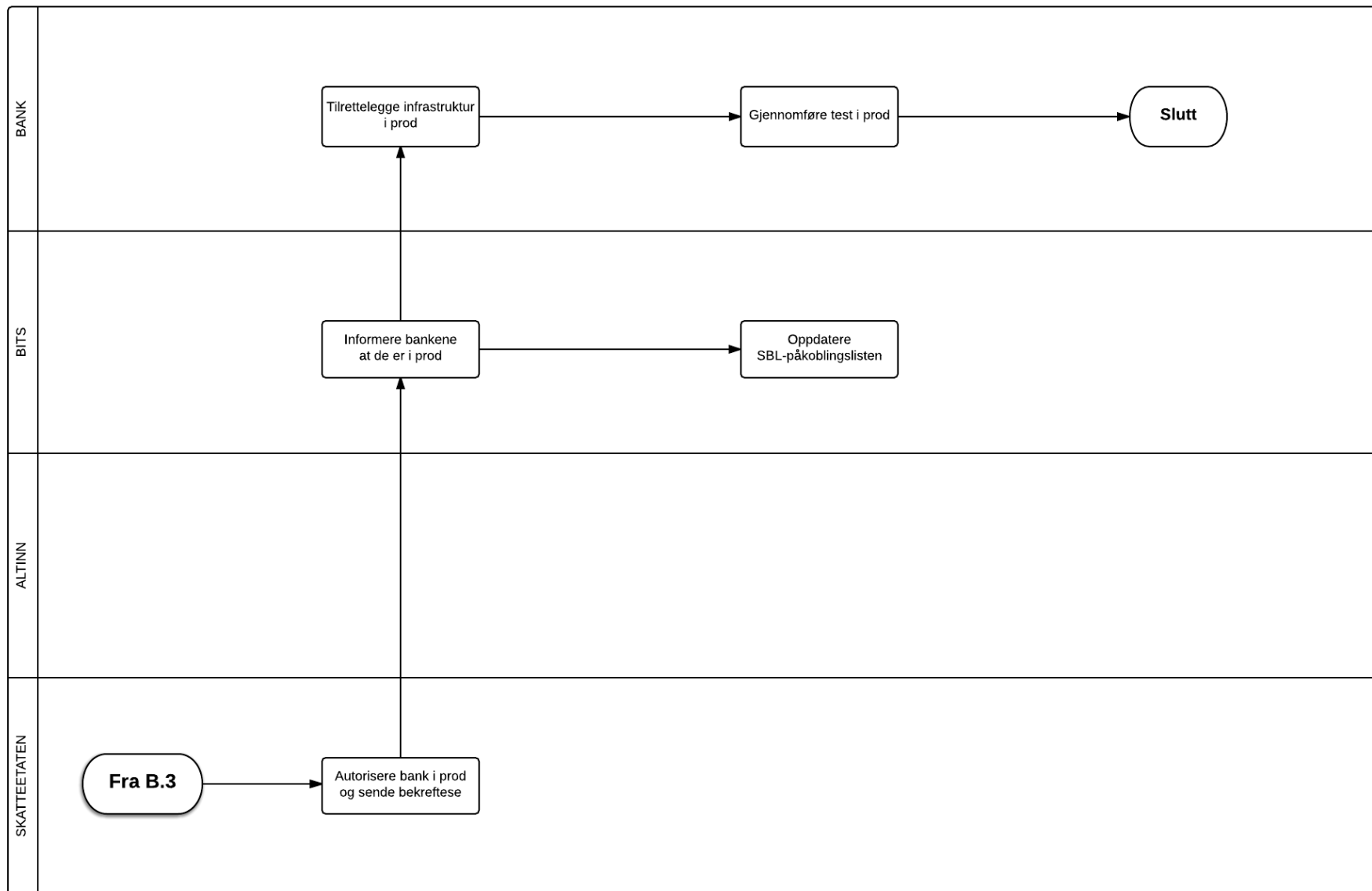
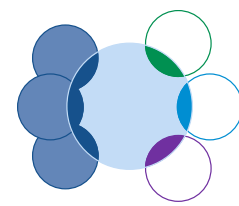
B.2 Signering av vilkår for bruk av bankene

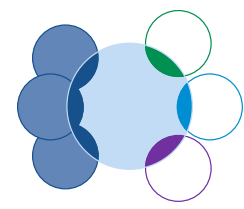


B.3 Påkobling til test



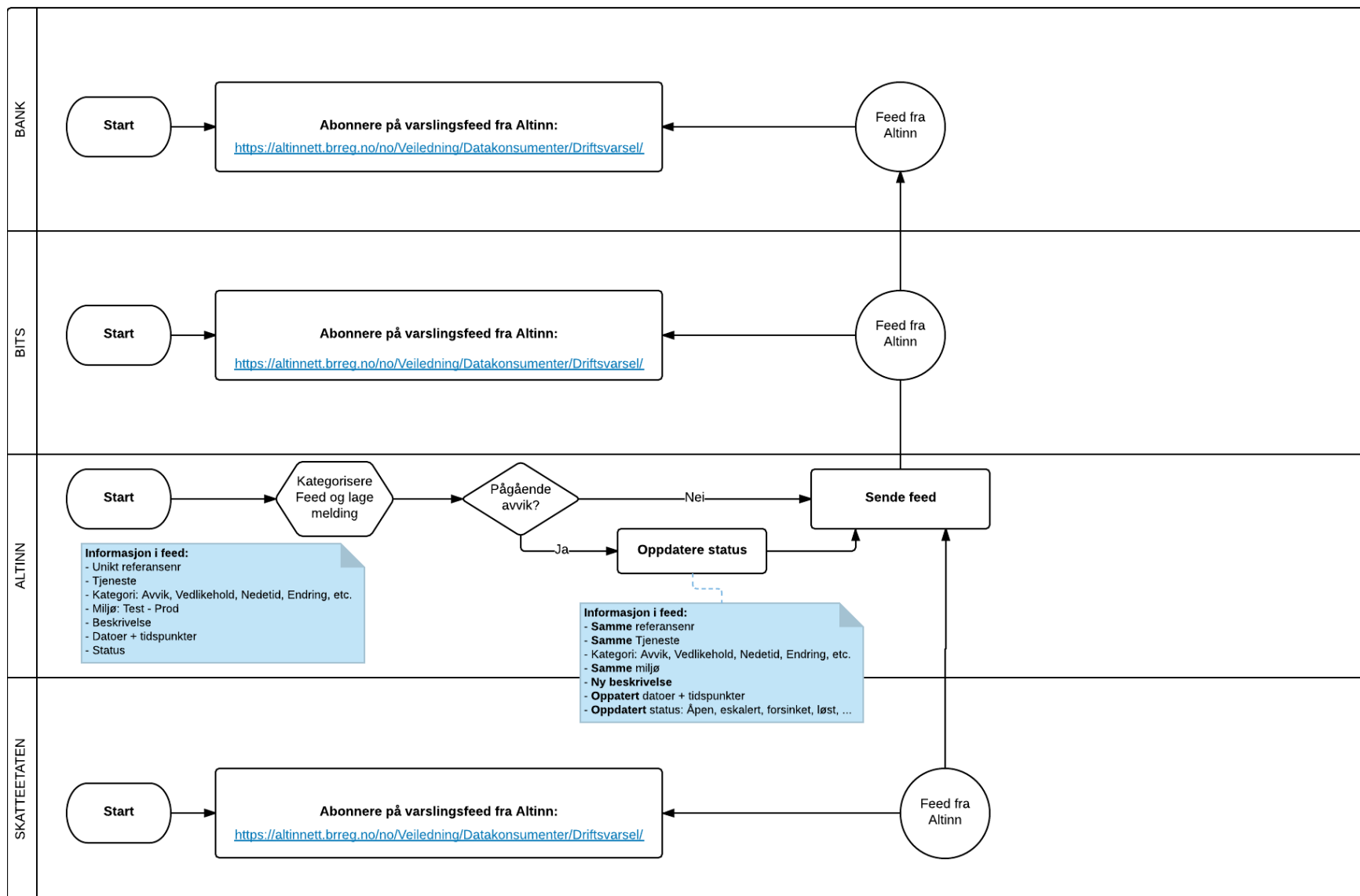
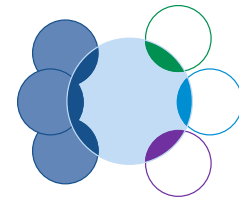
B.4 Påkobling til produksjon



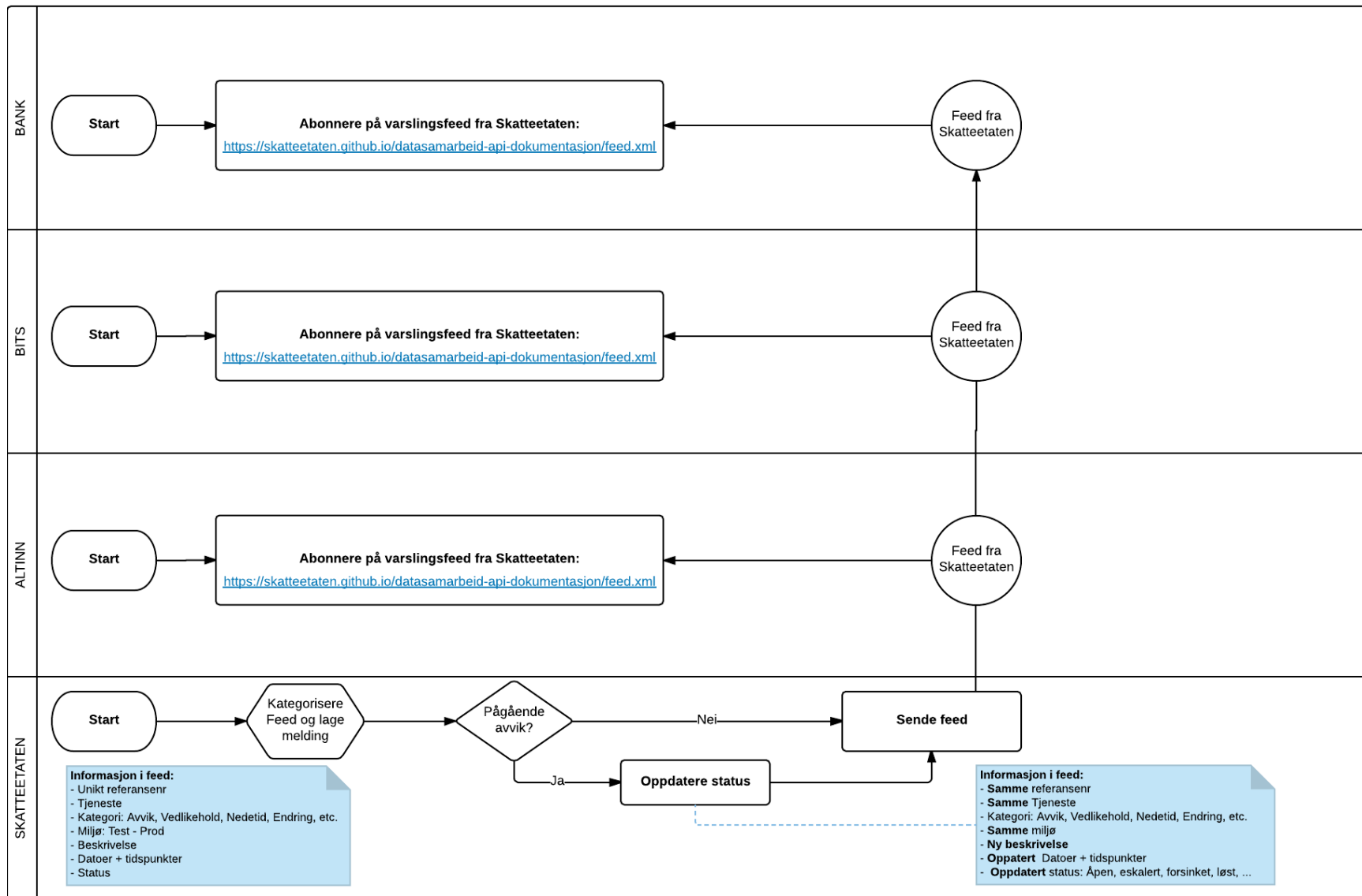
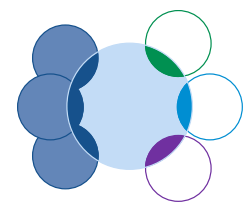


Varsling ut til bank

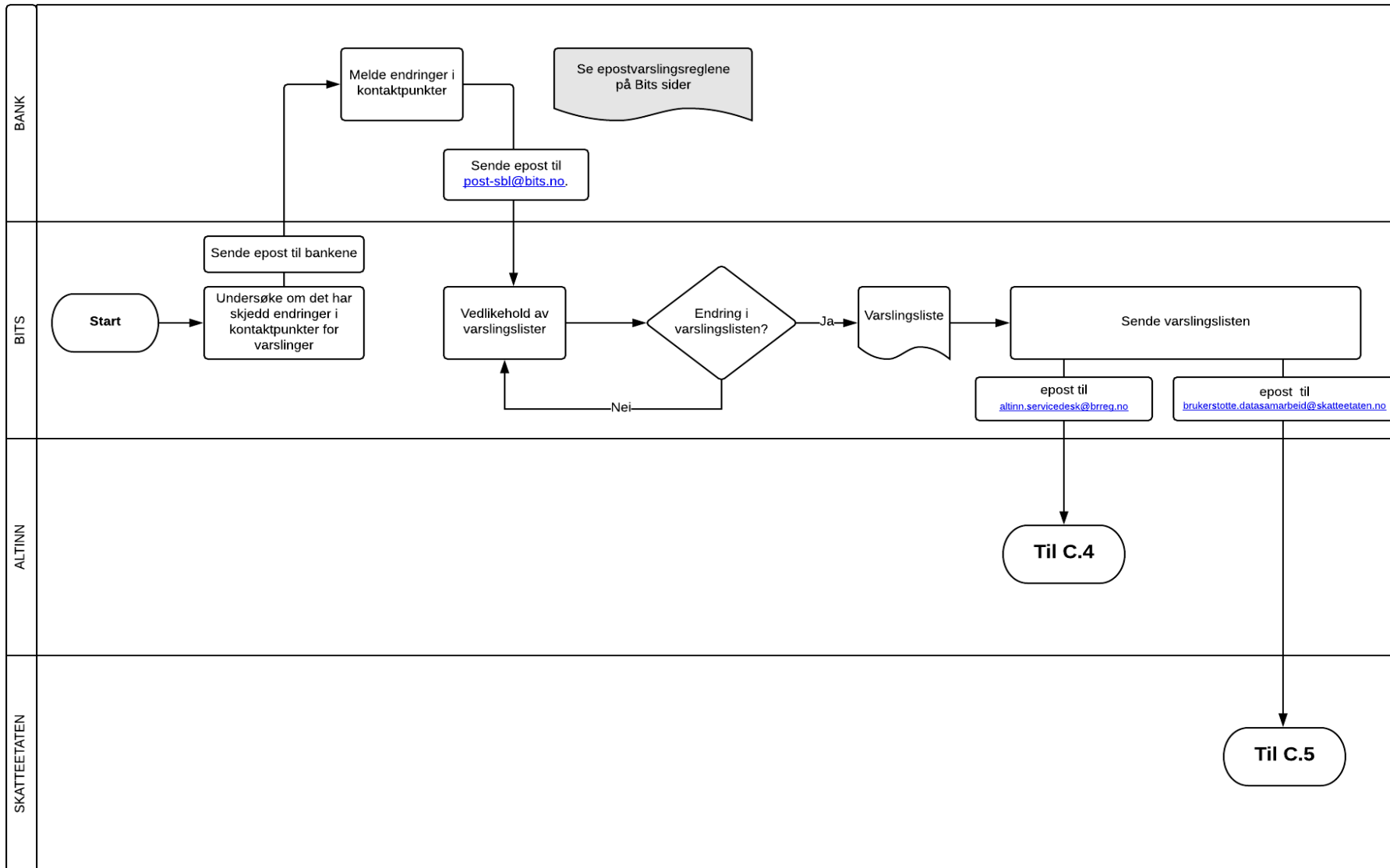
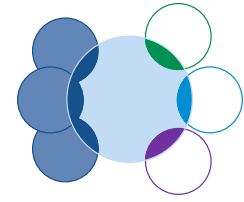
C.1 Varsling Altinn-Feed



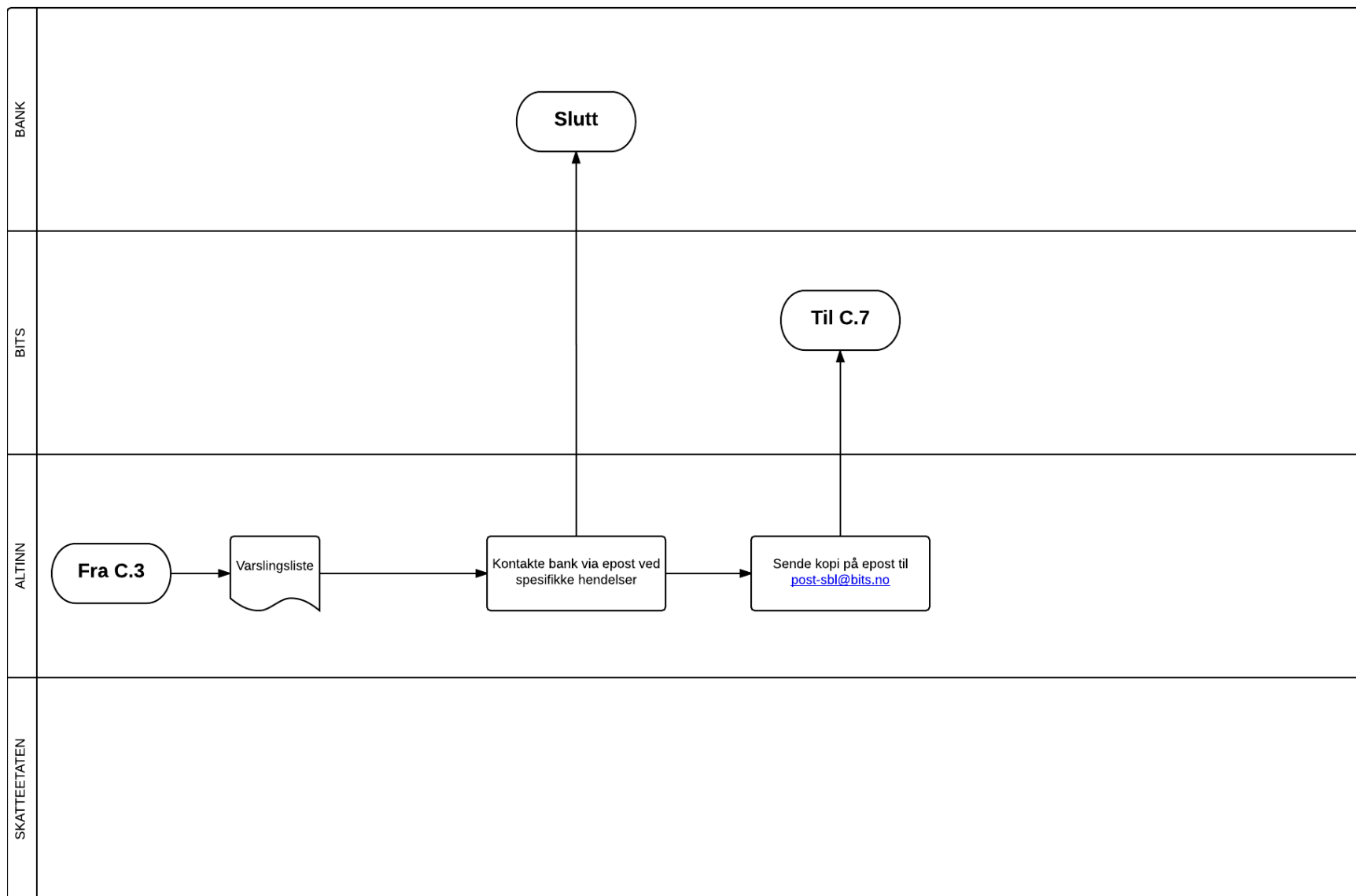
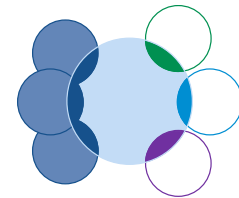
C.2 Varsling Skatteetaten-Feed



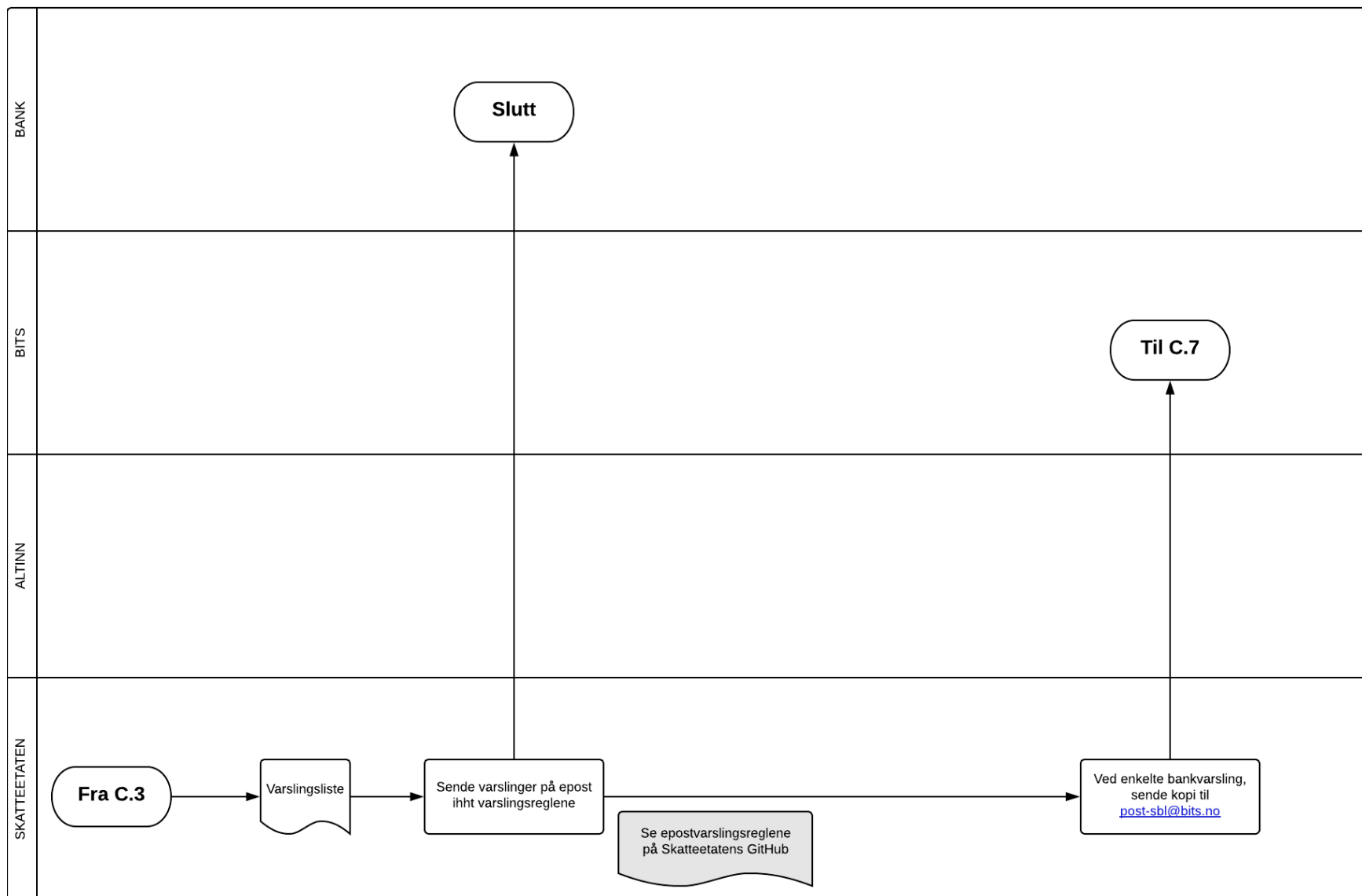
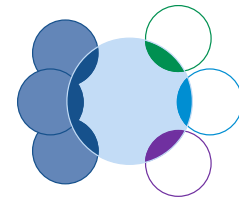
C.3 Vedlikehold av epost varslingsliste



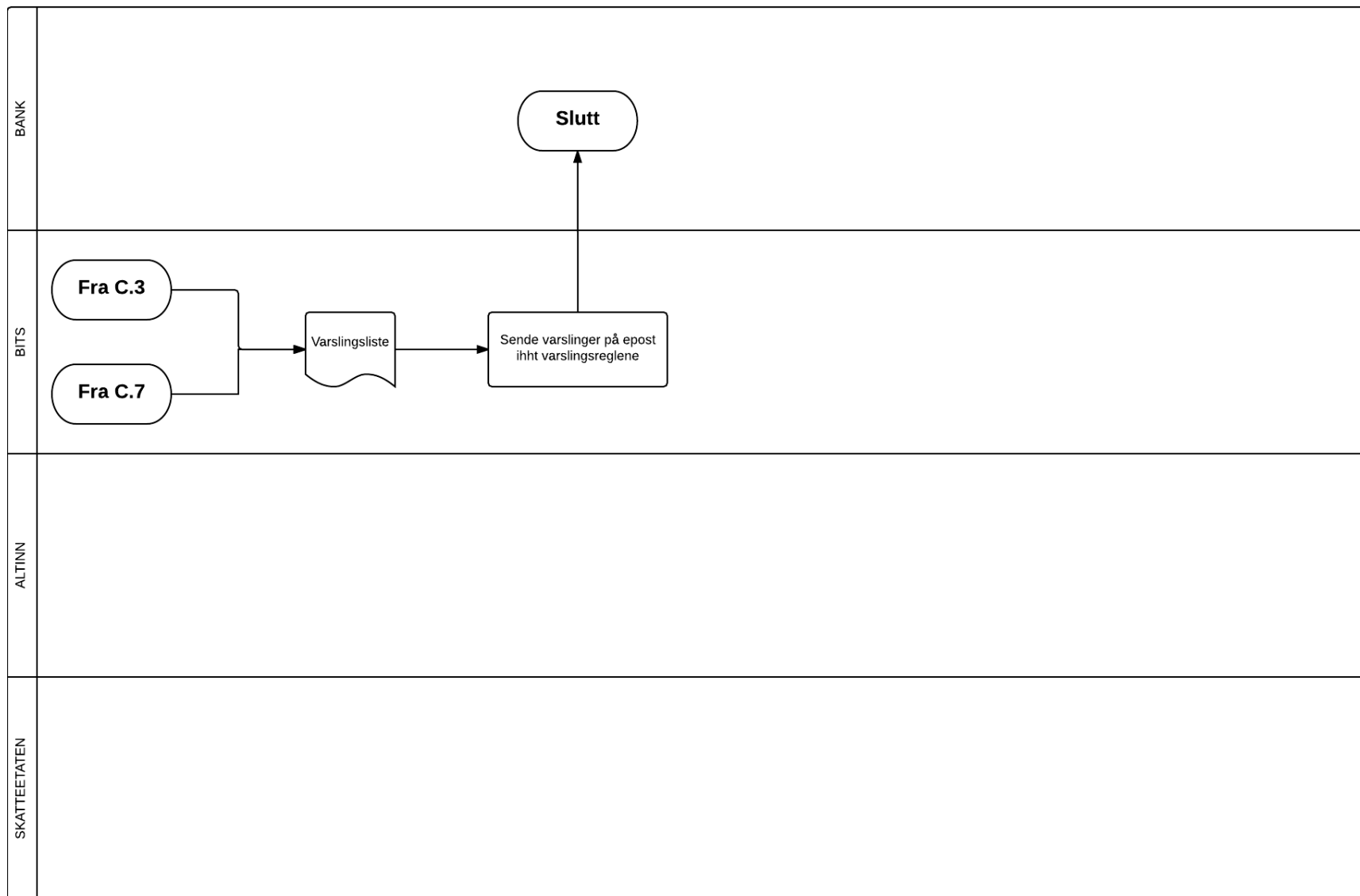
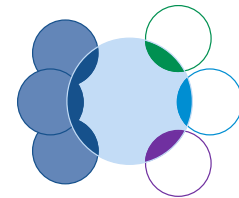
C.4 Ekstraordinær varsling Altinn – Via epost



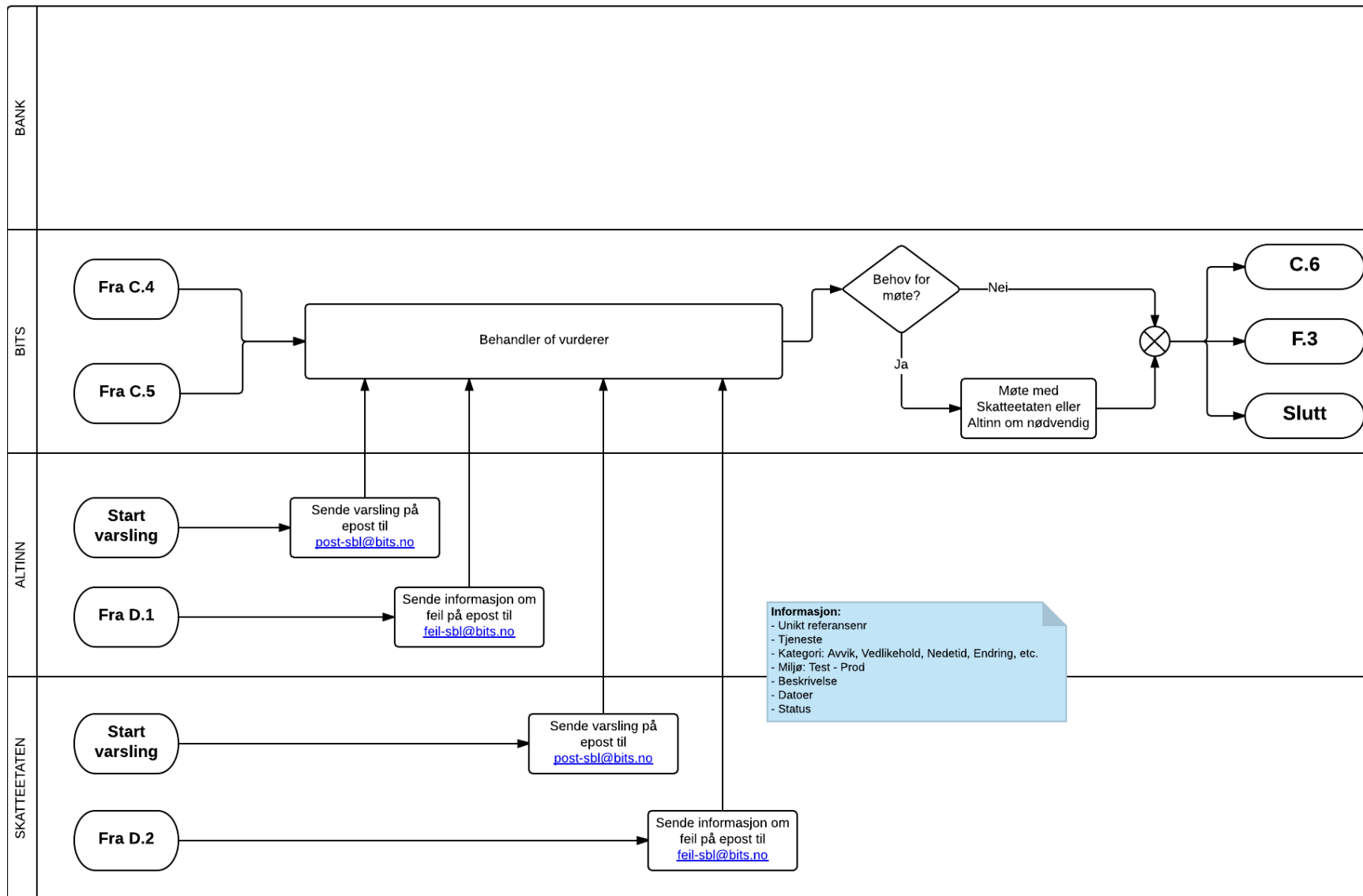
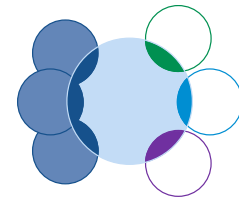
C.5 Ekstraordinær varsling Skatteetaten – Via epost



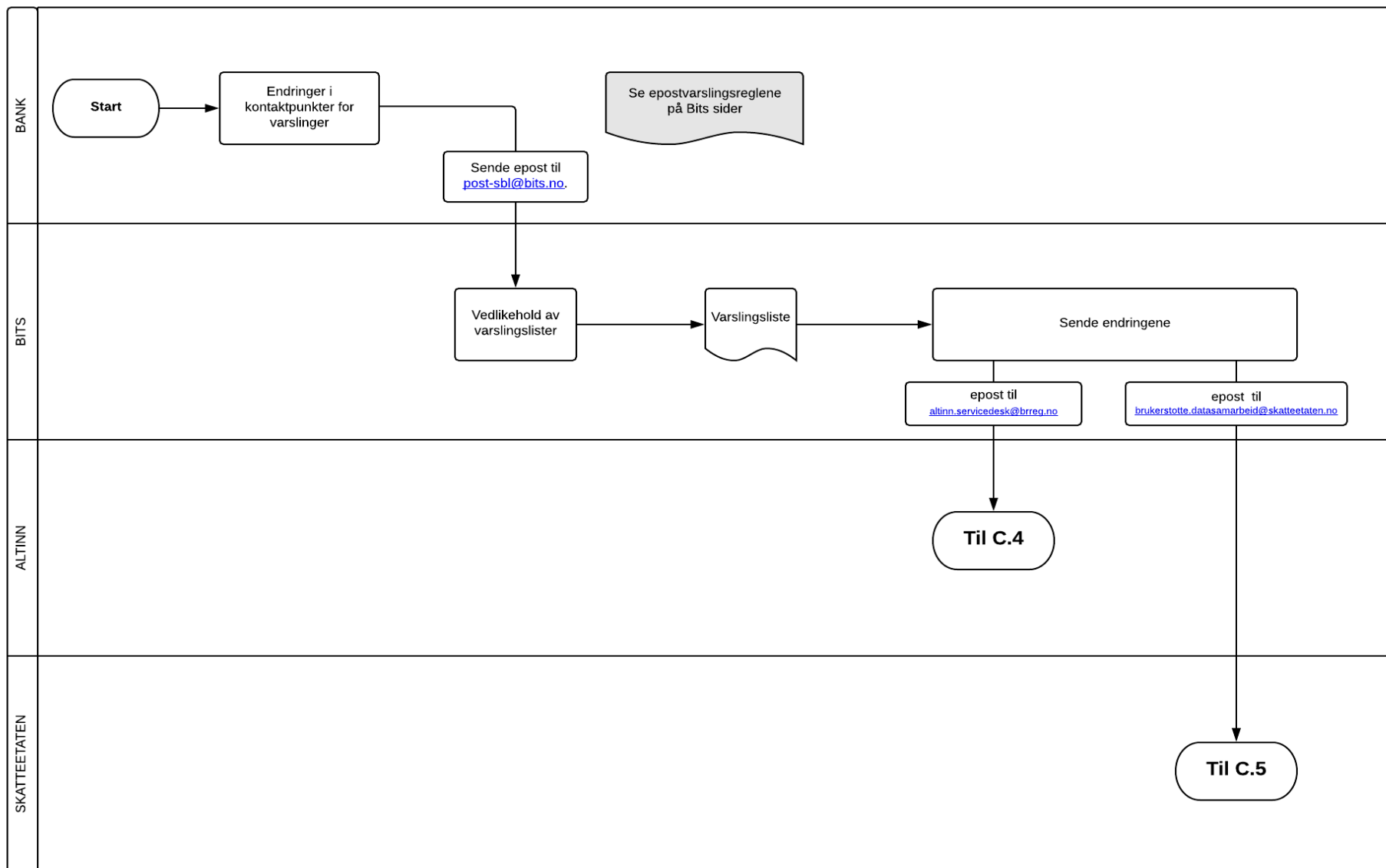
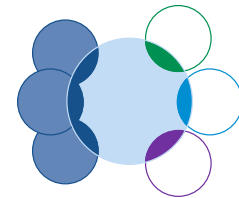
C.6 Varsling Bits – Via epost

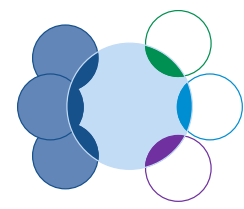


C.7 Informasjon til Bits (segmentpartner) fra Skatteetaten og Altinn



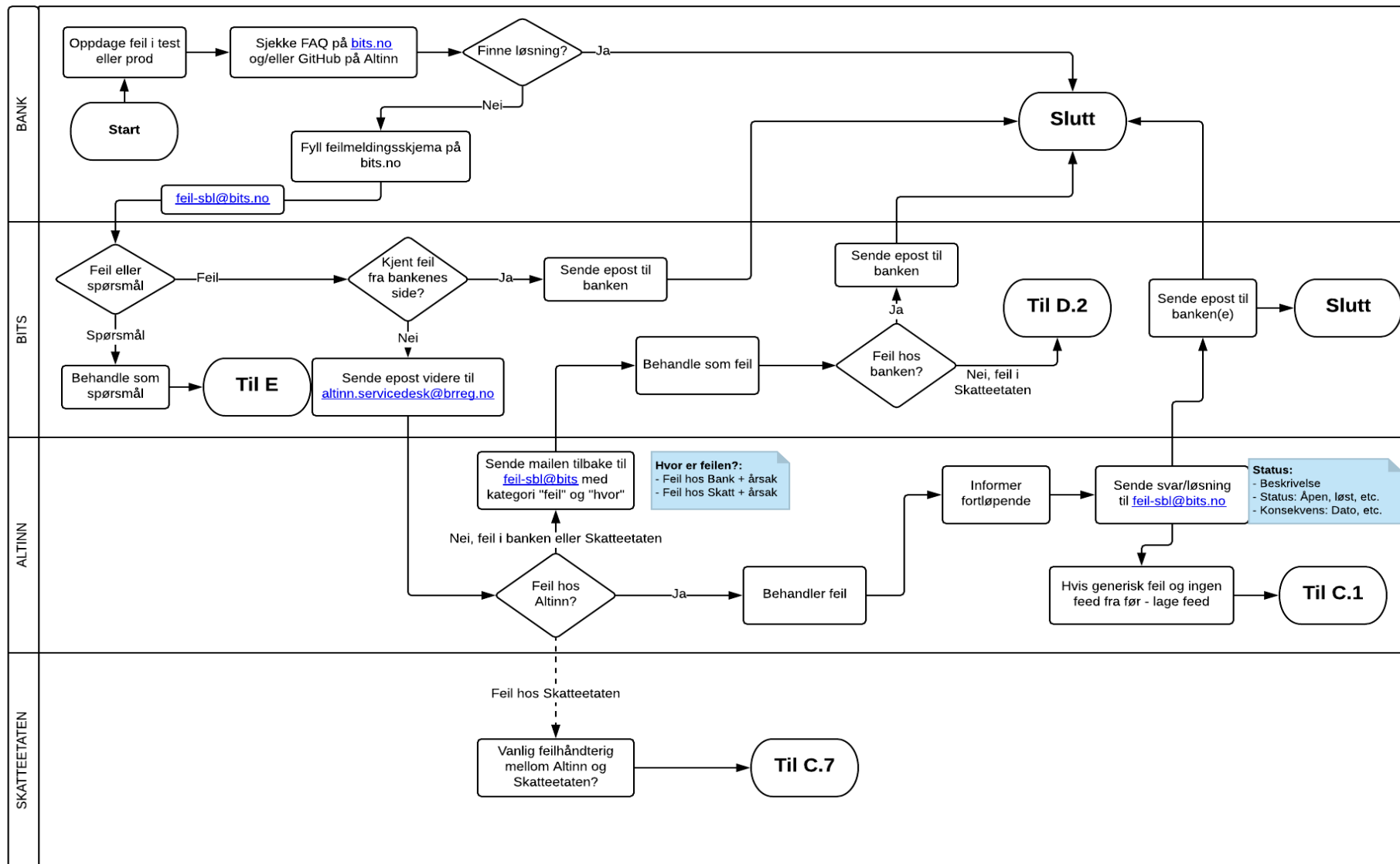
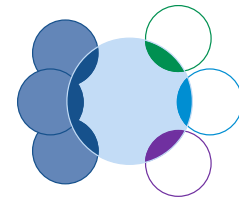
C.8 Vedlikehold av epost for varslingsliste fra bankene



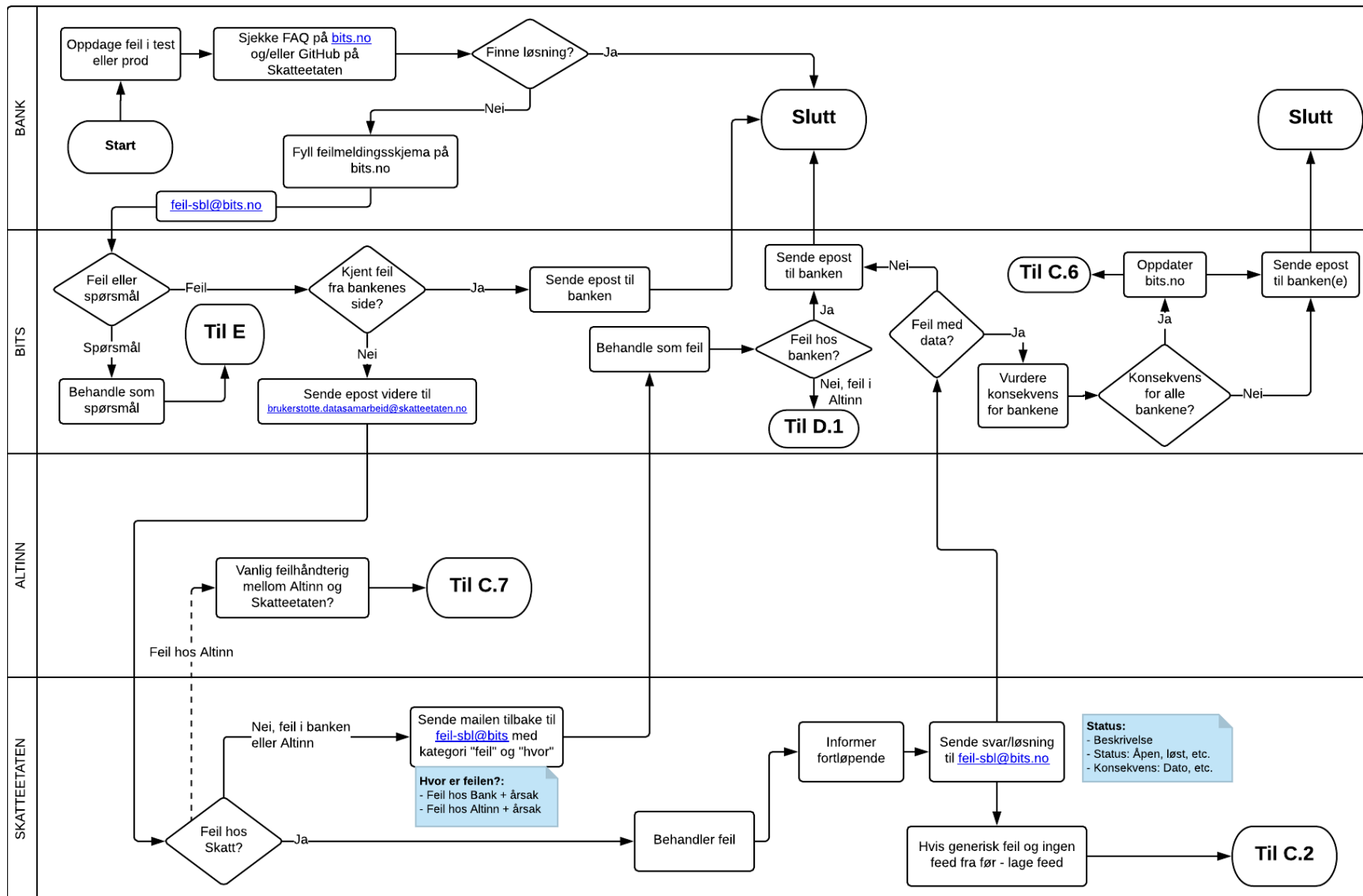
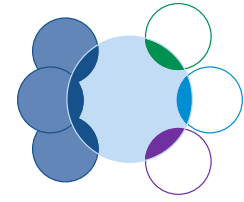


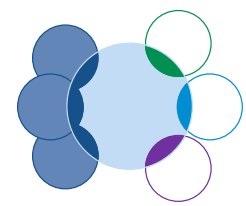
D Feilmelding fra bank

D.1 Feilmelding fra bank til Altinn



D.2 Feilmelding fra bank til Skatteetaten





E Spørsmål fra bank og faglig veiledning



Skatteetaten



Finans Norge



BITS



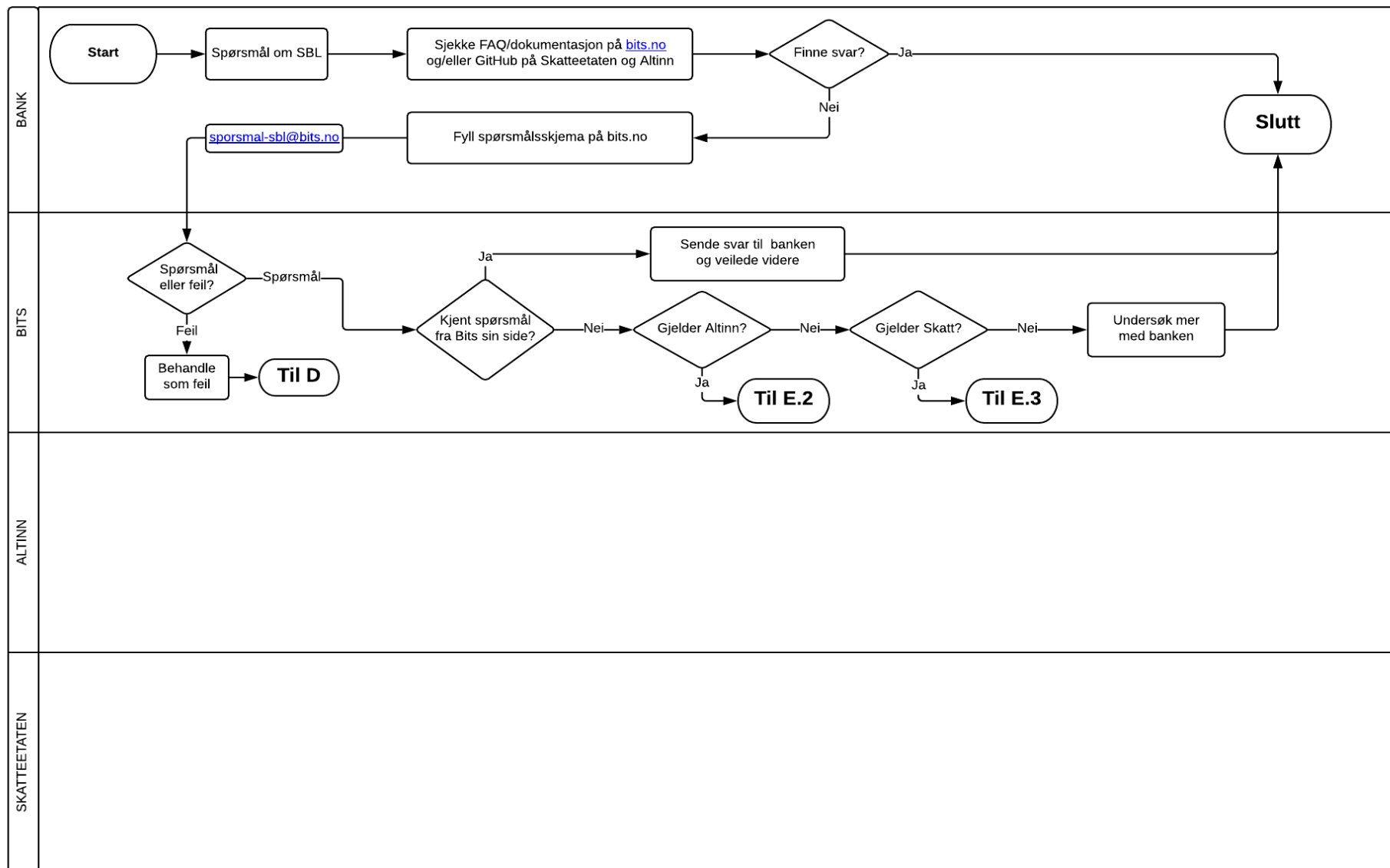
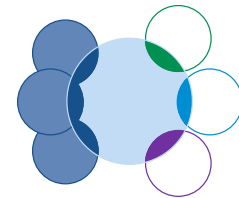
altinn
Brønnøysundregistrene



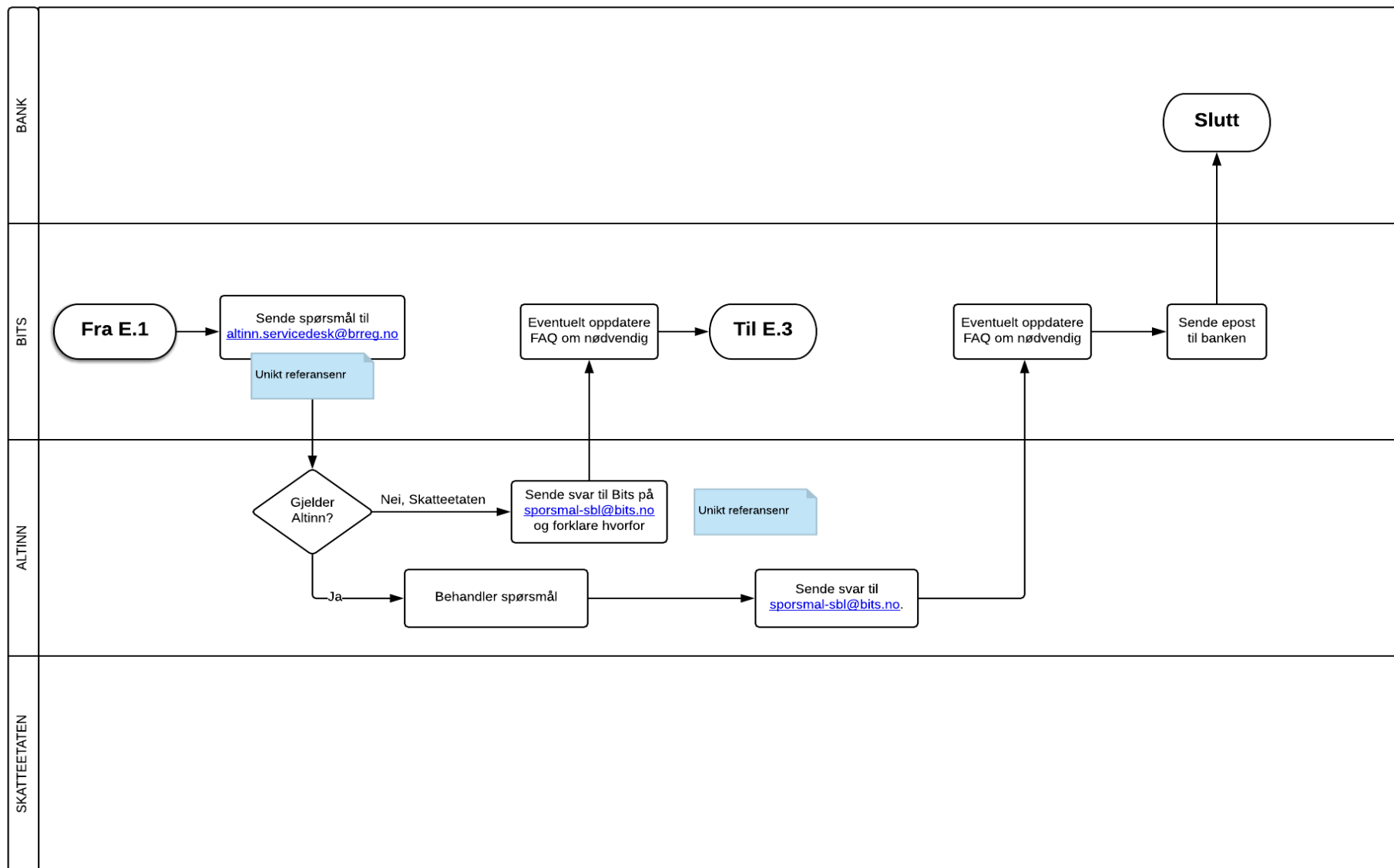
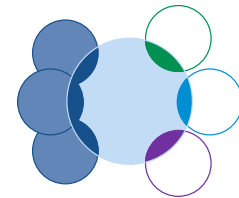
POLITIET
POLITIDIREKTORATET



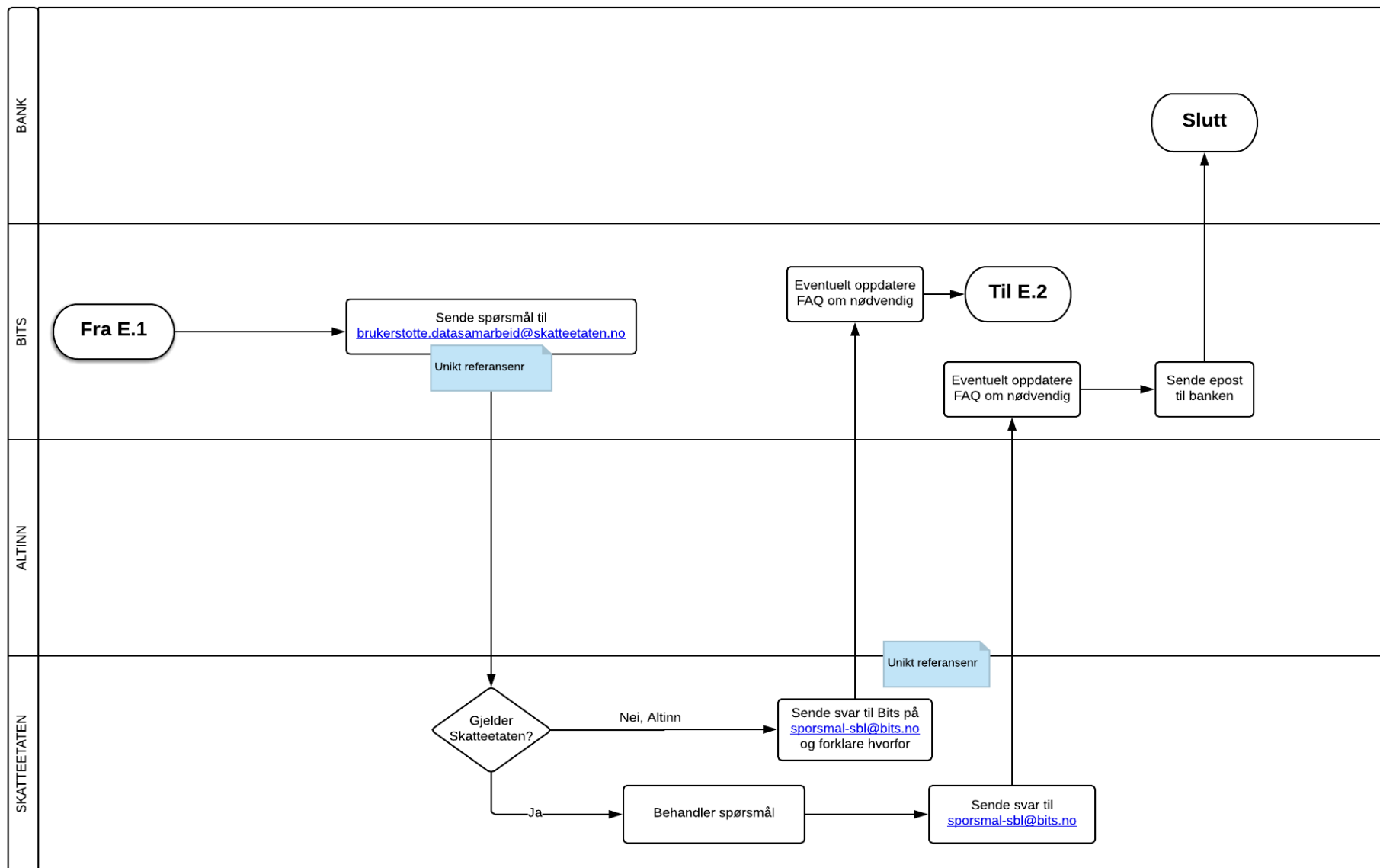
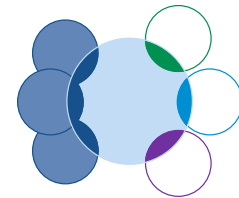
E.1 Spørsmål fra bank til Bits

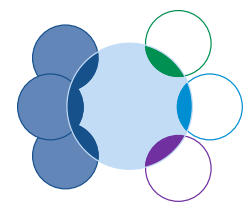


E.2 Spørsmål fra Bits til Altinn



E.3 Spørsmål fra Bits til Skatteetaten





F Endringsønsker og forvaltning av vilkår



Skatteetaten

 Finans Norge

 **BITS**

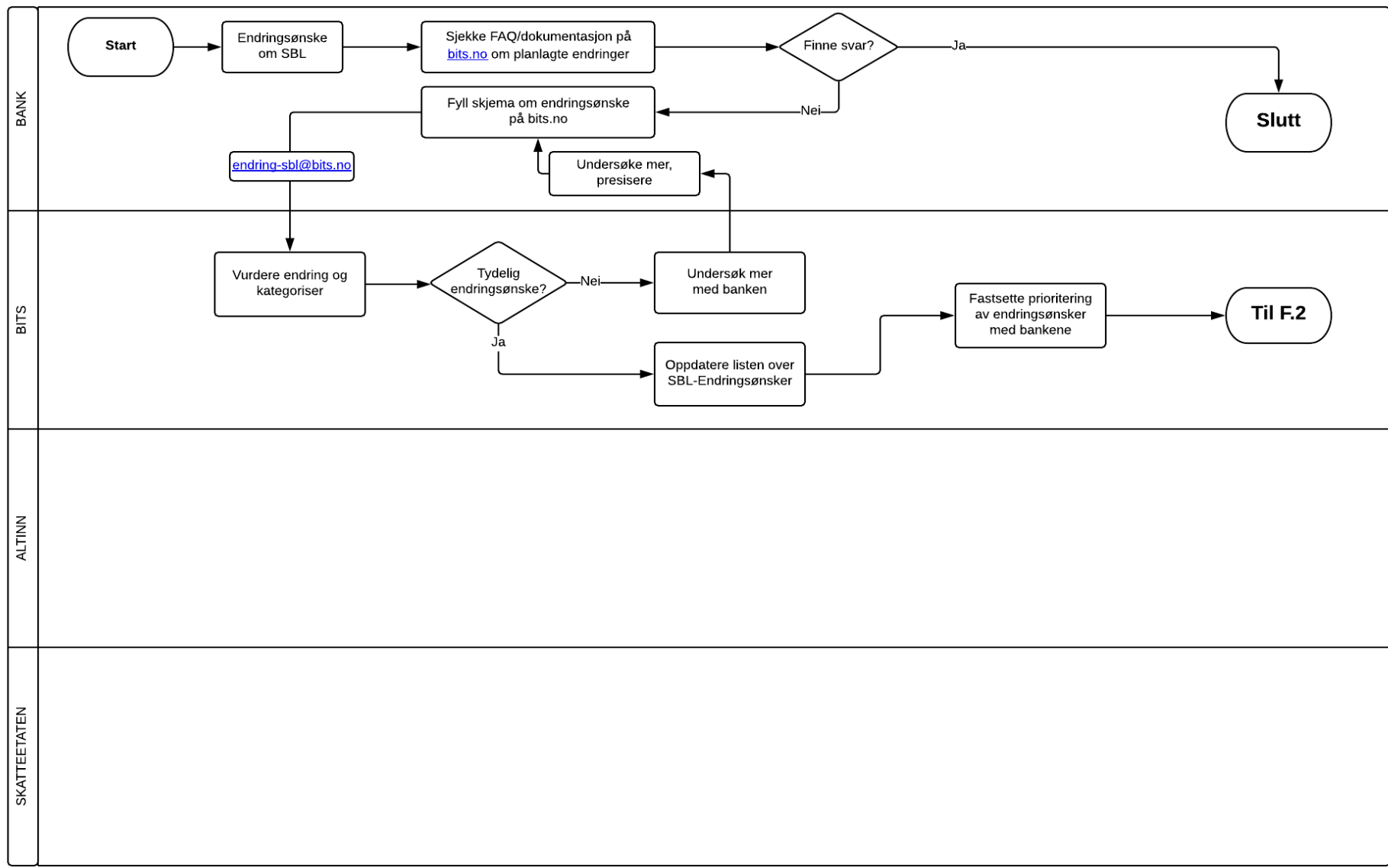
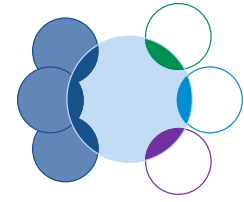
 **altinn**
Brønnøysundregistrene



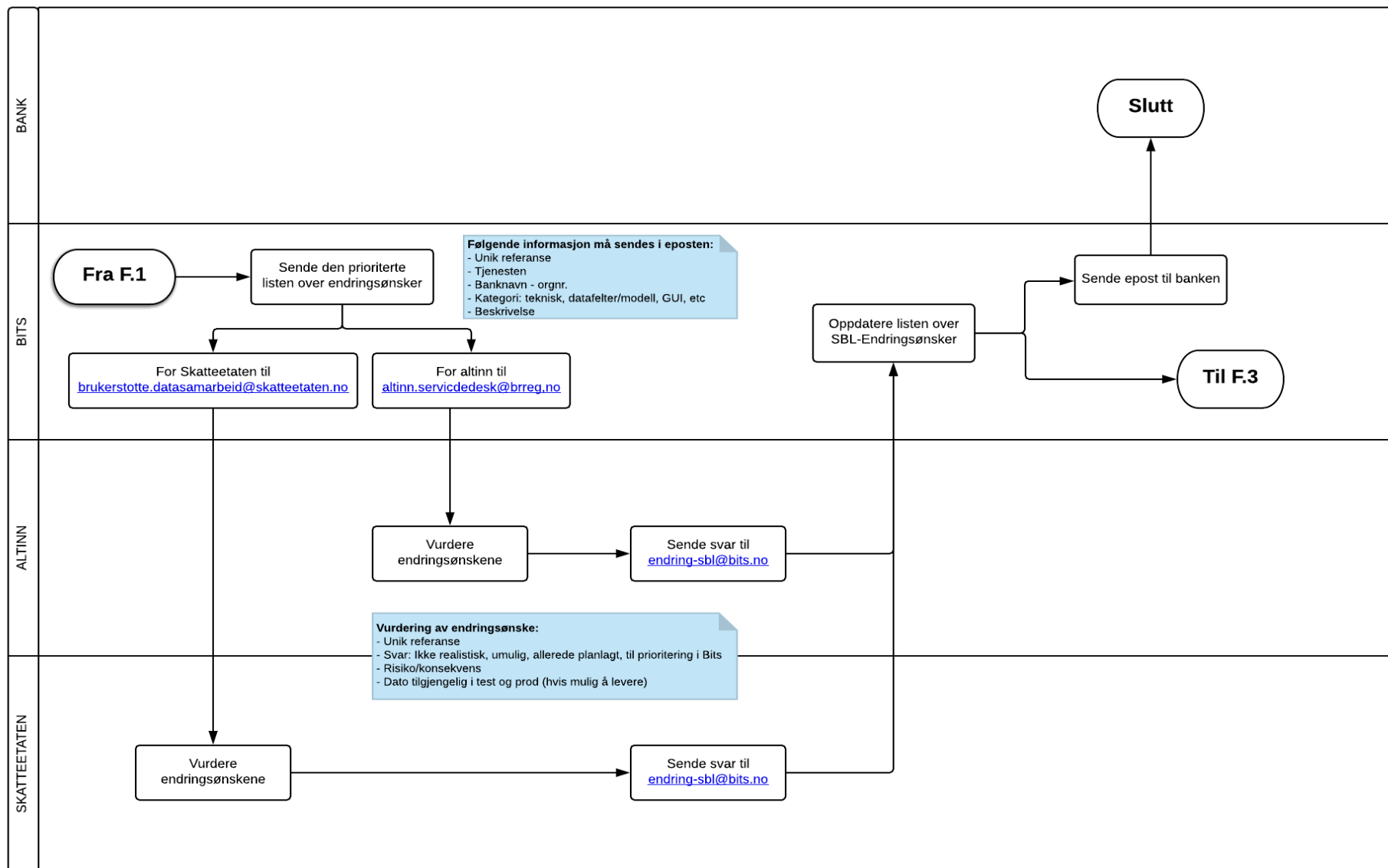
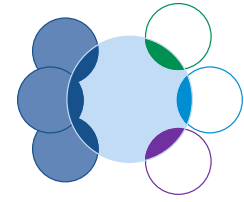
POLITIET
POLITIDIREKTORATET



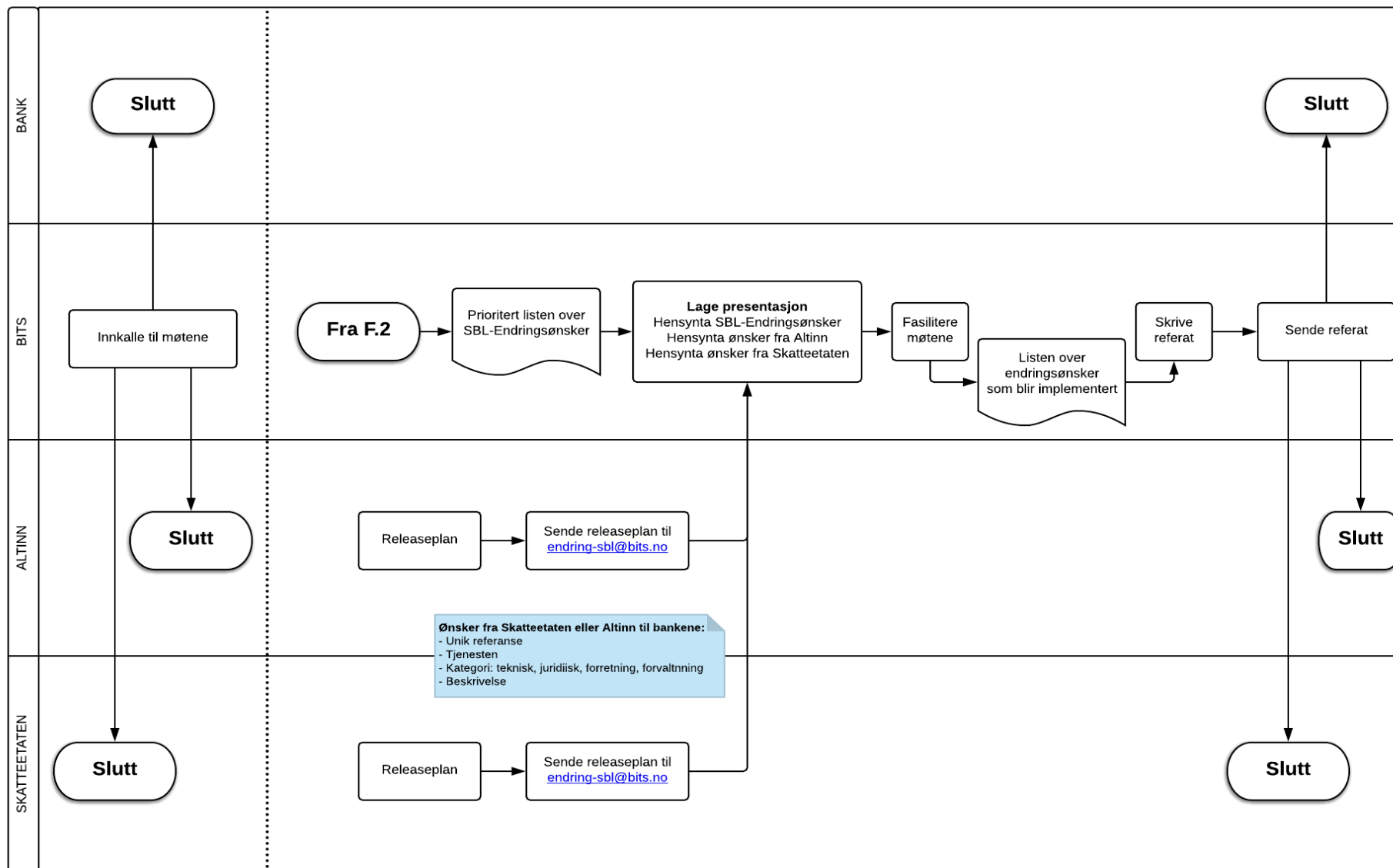
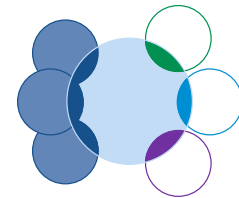
F.1 Registrere og prioritere endringsønsker fra bank



F.2 Behandle endringsønsker med Skatteetaten og Altinn



F.3 Møteplan for endringshåndtering



F.4 Forvaltning av vilkår

